



STEALTH™ 500

QUICK START GUIDE GUIDE DE DÉMARRAGE RAPIDE

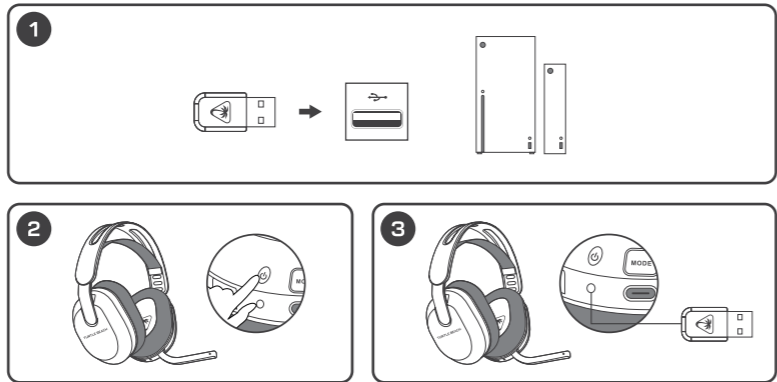
IMPORTANT READ BEFORE USING

IMPORTANT LIRE AVANT UTILISATION

STEALTH 500
CERTIFICATION MODEL:
HEADSET: HWBB0005
DONGLE: HWA0005

SETUP FOR XBOX® | CONFIGURATION POUR XBOX®

Xbox version only



EN

Connect wireless transmitter to the USB port on Xbox® Power on headset Wait for headset and USB wireless transmitter to pair

ES

Conecta el transmisor inalámbrico al puerto USB de la Xbox® Enciende los auriculares Espera a que se emparejen los auriculares y el transmisor USB

JP

ワイヤレストランスミッターを Xbox® の USB 端子に接続します。ヘッドセットの電源を入れます。ヘッドセットと USB トランスミッターがペアリングされるのを待ちます。

FR

Reliez l'émetteur sans-fil au port USB sur Xbox® Allumez le casque Attendez que le casque et l'émetteur USB soient appariés

DE

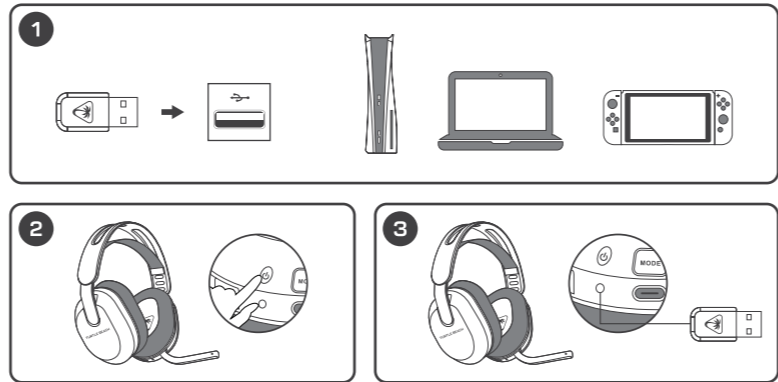
Verbinde den kabellosen Sender mit dem USB Anschluss der Xbox® Schalte das Headset ein Warte, bis Headset und USB Sender gekoppelt sind

KO

Xbox®의 USB 포트에 무선 트랜스미터 연결 헤드셋 전원 켜기 헤드셋과 USB 트랜스미터가 페어링될 때까지 대기

SETUP FOR PLAYSTATION®, PC AND NINTENDO SWITCH™ CONFIGURATION POUR PLAYSTATION®, PC ET NINTENDO SWITCH™

PlayStation and PC versions only



EN

Connect wireless transmitter to the USB port on PlayStation®, PC or Nintendo Switch™ Power on headset Wait for headset and USB wireless transmitter to pair

ES

Conecta el transmisor inalámbrico al puerto USB en PlayStation®, PC o Nintendo Switch™ Enciende los auriculares Espera a que se emparejen los auriculares y el transmisor USB

JP

ワイヤレストランスミッターを USB 端子に接続します。(PlayStation®, PC, Nintendo Switch™)ヘッドセットの電源を入れます。ヘッドセットと USB トランスミッターがペアリングされるのを待ちます。

FR

Reliez l'émetteur sans-fil au port USB sur PlayStation®, PC ou Nintendo Switch™ Allumez le casque Attendez que le casque et l'émetteur USB soient appariés

DE

Verbinde den kabellosen Sender mit dem USB Anschluss von PlayStation®, PC oder Nintendo Switch™ Schalte das Headset ein Warte, bis Headset und USB Sender gekoppelt sind

KO

USB 포트에 무선 트랜스미터 연결 (PlayStation®, PC 또는 Nintendo Switch™) 헤드셋 전원 켜기 헤드셋과 USB 트랜스미터가 페어링될 때까지 대기

Regulatory Compliance Statements for the STEALTH 500 [Wireless Gaming Headset – Headset Model: HWBB0005 & Dongle Model: HWA0005]

Federal Communications Commission (FCC) Compliance Notices

Class B Interference Statement
This equipment has been tested and found to comply with the limits for a Class B digital device, pursuant to Part 15, Subpart B of the FCC Rules. These limits are designed to provide reasonable protection against harmful interference in a residential installation. This equipment generates, uses, and can radiate radio frequency energy and, if not installed and used in accordance with the instructions, may cause harmful interference to radio communications. However, there is no guarantee that interference will not occur in a particular installation. If this equipment does cause harmful interference to radio or television reception, which can be determined by turning the equipment off and on, the user is encouraged to try to correct the interference by one or more of the following measures:

- Reorient or relocate the receiving antenna.
- Increase the separation between the equipment and receiver.
- Connect the equipment into an outlet on a circuit different from that to which the receiver is connected.
- Consult the dealer or an experienced radio/TV technician for help.

FCC Caution:

This device complies with Part 15 of the FCC Rules. Operation is subject to the following two conditions: (1) This device may not cause harmful interference, and (2) This device must accept any interference received, including interference that may cause undesired operation. This product is compliant with the Consumer Product Safety Improvement Act of 2008, Public Law 110-314 (CPSIA)

FCC RF Radiation Exposure Statement:

This equipment complies with FCC radiation exposure limits set forth for an uncontrolled environment. End users must follow the specific operating instructions for satisfying RF exposure compliance. This transmitter must not co-located or operating in conjunction with any other antenna or transmitter.

CANADA-statement

This device complies with Innovation, Science and Economic Development Canada's licence-exempt RSS(s). Operation is subject to the following two conditions:

- (1) This device may not cause interference; and
- (2) This device must accept any interference, including interference that may cause undesired operation of the device.

Le présent appareil est conforme aux CNR d'Innovation, Sciences et Développement économique Canada exempt(s) de licence(s) applicables aux appareils radio exempts de licence. L'exploitation est autorisée aux deux conditions suivantes:

- (1) l'appareil ne doit pas produire de brouillage;
- (2) l'utilisateur de l'appareil doit accepter tout brouillage radioélectrique subi, même si le brouillage est susceptible d'en compromettre le fonctionnement.

Radiation Exposure Statement:

The product complies with Canada portable RF exposure limits set forth for an uncontrolled environment and are safe for intended operation as described in this manual. The further RF exposure reduction can be achieved if the product can be kept as far as possible from the user body or set the device to lower output power if such function is available.

Le produit est conforme aux limites d'exposition aux appareils portables RF pour les États-Unis et le Canada établies pour un environnement non contrôlé. Le produit est sûr pour un fonctionnement tel que décrit dans ce manuel. La réduction aux expositions RF peut être augmentée si l'appareil peut être conservé aussi loin que possible du corps de l'utilisateur ou que le dispositif est réglé sur la puissance de sortie la plus faible si une telle fonction est disponible.

Battery Caution:

- Do not disassemble, impact, squeeze or throw into fire;
- Do not continue to use if severe swelling;
- Do not place in a high temperature environment;
- Do not use after the battery is flooded;
- Do not use any charger other than that specifically provided for use with the equipment;
- Dispose of used batteries according to the instructions.

For warranty information and service, please visit www.turtlebeach.com/warranty

WARRANTY SERVICE FOR PURCHASES IN AUSTRALIA

Our goods come with guarantees that cannot be excluded under the Australian Consumer Law. For complete details please visit www.turtlebeach.com/warranty.

To make a warranty claim in Australia during the Warranty Period, Purchaser should contact the VTB repair centre: Tecworks International Pty Ltd, 13 Distribution Place, Seven Hills NSW 2147, Tel: 1300 074 512

European Union and European Free Trade Association (EFTA) Regulatory Compliance

Declaration of Conformity

Marking by this symbol:

Hereby, Voyetra Turtle Beach Inc. declares that **Stealth 500** Headset Model: HWBB0005 & Dongle Model: HWA0005 is in compliance with Directive 2014/30/EU (EMC), 2014/53/EU (RED), 2014/35/EU (Safety), 2015/863 amending Annex II to 2011/65/EC (RoHS), 2012/19/EU (WEEE), 2006/1907/EU (REACH), 84/662/EEC (PACKAGING), 2006/66/EC (Battery), Electromagnetic Compatibility Regulations 2015 (EMC), Radio Equipment Regulations 2017 (Radio), Electrical Equipment Regulations 2015 (Safety), The Restriction of the Use of Certain Hazardous Substances in Electrical and Electronic Equipment Regulations 2012.

The full text of the EU/UK declaration of conformity is available at the following internet address: <http://www.turtlebeach.com/homologation>

Radio frequency: 2400MHz

Operating frequency: 2400~2483.5MHz

Max. Output power: 4 dBm



This symbol on the product or its packaging indicates that this product must not be disposed of with your other household waste. Instead, it is your responsibility to dispose of your waste equipment by handing it over to a designated collection point for the recycling of waste electrical and electronic equipment. The separate collection and recycling of your waste equipment at the time of disposal will help conserve natural resources and ensure that it is recycled in a manner that protects human health and the environment. For more information about where you can drop off your waste for recycling, please contact your local authority, or where you purchased your product.

Turtle Beach Europe Ltd is obligated as a producer with a main activity of selling under The Producer Responsibility Obligations (Packaging Waste) Regulations 2007. To fulfill our obligation we are registered with Comply Direct and their Recycling Room. Here you will find advice and information on packaging waste management, recycling symbols and the waste hierarchy principles of reduce, reuse and recycle. <https://www.complydirect.com/the-recycling-room/> For instructions in other languages, please visit <http://www.turtlebeach.com/homologation>

Copyright © 2024, Voyetra Turtle Beach, Inc. All rights reserved. No part of this document may be reproduced without permission. Any product names mentioned in this manual may be trademarks or registered trademarks and are the property of their respective owners.

Warning: To prevent possible hearing damage, do not listen at high volume levels for long periods. 無線耳機 型號: HWBB0005 額定: 5VDC, 0.5A 電池規格: 3.7VDC, 500mAh 無線規格: 藍牙 / 2.4GHz

Taiwan NCC Statement 取得審驗證明之低功率射頻器材，非經核准，公司、商號或使用者均不得擅自變更頻率、加大功率或變更原設計之特性及功能。低功率射頻器材之使用不得影響飛航安全及干擾合法通信；經發現有干擾現象時，應立即停用，並改善至無干擾時方得繼續使用。前述合法通信，指依電信管理法規動作之無線電通信。低功率射頻器材須符合通信事業、科技及醫療用電波輻射性電機設備之干擾。 CCAJ24LP2390T4 R3242 R415 CCAJ24LP2410T0

Recycling symbols and contact information: R18-240020 R18-240021 R-R-VTB-HWB0005 R-R-VTB-HWA0005 P/N: 426-252-005-501 RA

IMPORTANT | IMPORTANT

PLEASE MAKE SURE YOUR HEADSET IS UPDATED WITH THE LATEST FIRMWARE.

VEUILLEZ VOUS ASSURER QUE VOTRE CASQUE DISPOSE DE LA DERNIÈRE VERSION DU MICROLOGICIEL.



Android

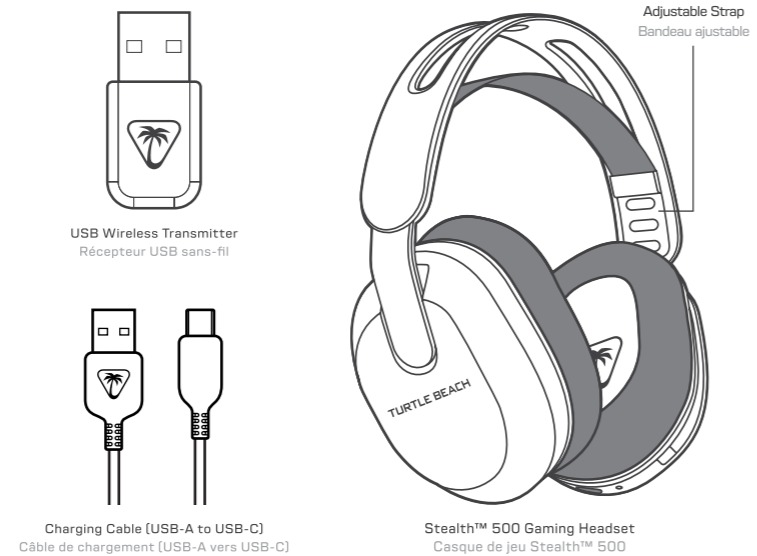


iOS

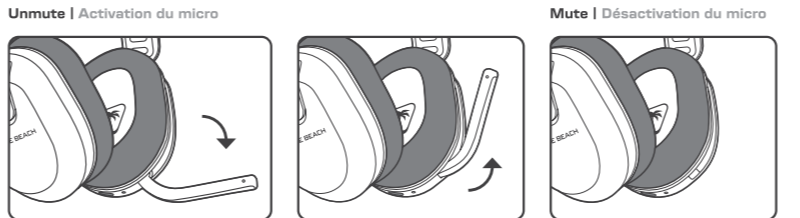
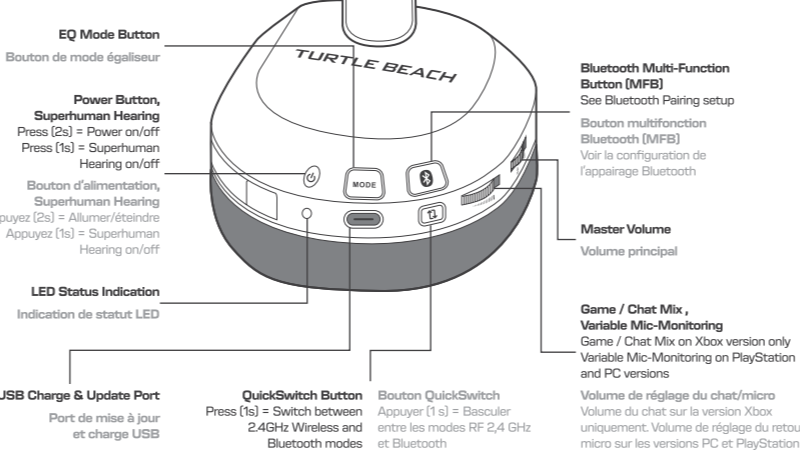
PACKAGE CONTENTS | CONTENU

PLEASE MAKE SURE YOUR HEADSET IS UPDATED WITH THE LATEST FIRMWARE.

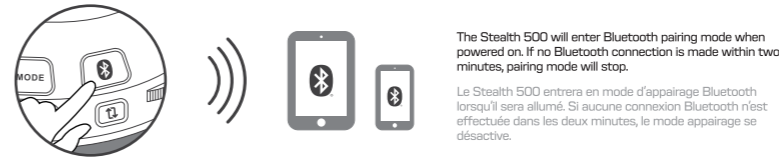
VEUILLEZ VOUS ASSURER QUE VOTRE CASQUE DISPOSE DE LA DERNIÈRE VERSION DU MICROLOGICIEL.



HEADSET CONTROLS | COMMANDES DU CASQUE



BLUETOOTH SETUP | CONFIGURATION BLUETOOTH



To enable Bluetooth pairing mode: 1. Press and hold the Bluetooth multi-function button (MFB) until the "Pairing Bluetooth" voice prompt plays. 2. After placing your headset in pairing mode, select the headset from within your device's Bluetooth settings menu to connect. 3. The Bluetooth MFB is used to answer and end calls as well as media playback control when connected to a compatible mobile phone. The Stealth 500 will enter Bluetooth pairing mode when powered on. If no Bluetooth connection is made within two minutes, pairing mode will stop.

QUICKSWITCH BUTTON | BOUTON QUICKSWITCH

The QuickSwitch button allows you to quickly switch between low-latency 2.4GHz Wireless and Bluetooth modes based on your preference. Use Bluetooth mode to make calls, listen to music or connect to other compatible Bluetooth devices. We recommend using the 2.4GHz Wireless mode for best performance when gaming on consoles or PC. Note: Select advanced audio features available in 2.4GHz Wireless mode may not be supported in Bluetooth mode. The bouton QuickSwitch vous permet de basculer rapidement entre les modes sans-fil 2,4 GHz à faible latence et le Bluetooth selon vos préférences. Utilisez le mode Bluetooth pour passer des appels, écouter de la musique ou vous connecter à d'autres appareils Bluetooth compatibles. Nous recommandons d'utiliser le mode sans-fil 2,4 GHz pour obtenir les meilleures performances en jeux sur consoles ou PC. Remarque : Certaines fonctions audio avancées disponibles en mode sans-fil 2,4 GHz peuvent ne pas être prises en charge en mode Bluetooth.



Any questions? Des questions? www.turtlebeach.com/support

Please register your product to receive important updates. Enregistrez votre produit pour recevoir les mises à jour importantes. www.turtlebeach.com/productregistration

For warranty, visit: Concernant la garantie, visitez : www.turtlebeach.com/warranty